



Imagine Ending Hunger

Session Leaders

Charlotte Williams, Research & Innovation Manager

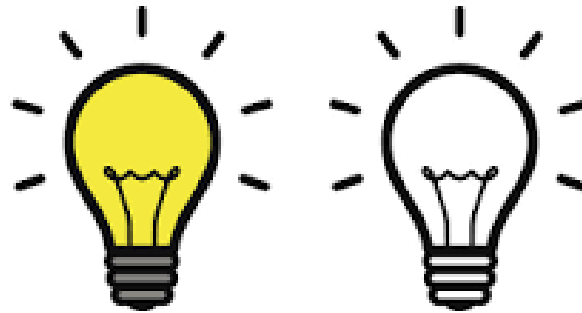
Jenny Yeager, Chief of Programs and Operations

Token Barnthouse, Special Projects & Assistant to the CEO

**Can we imagine a neighborhood that is
Hunger Free – What does that look like?**



What if?

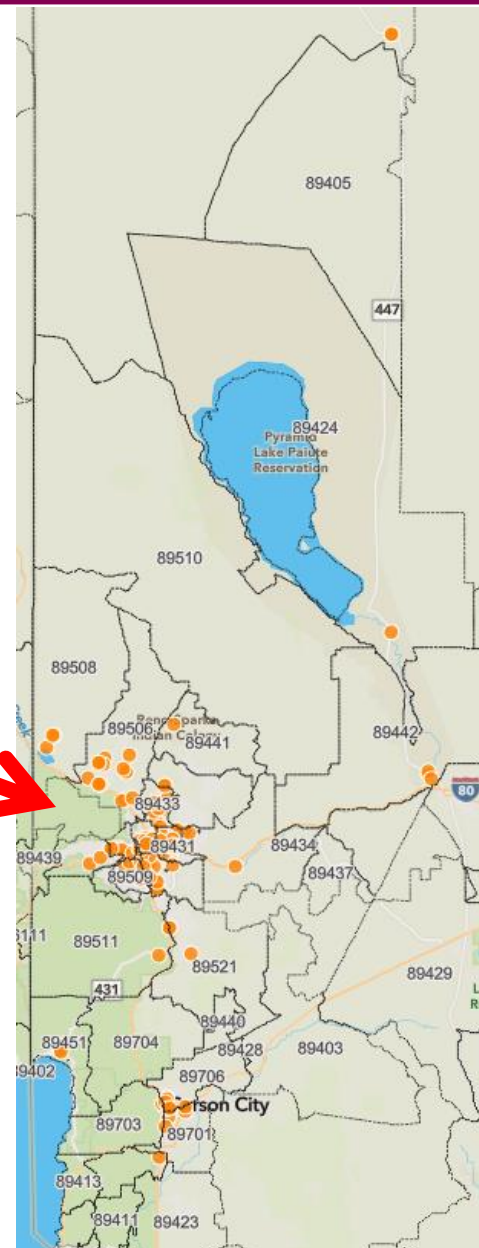
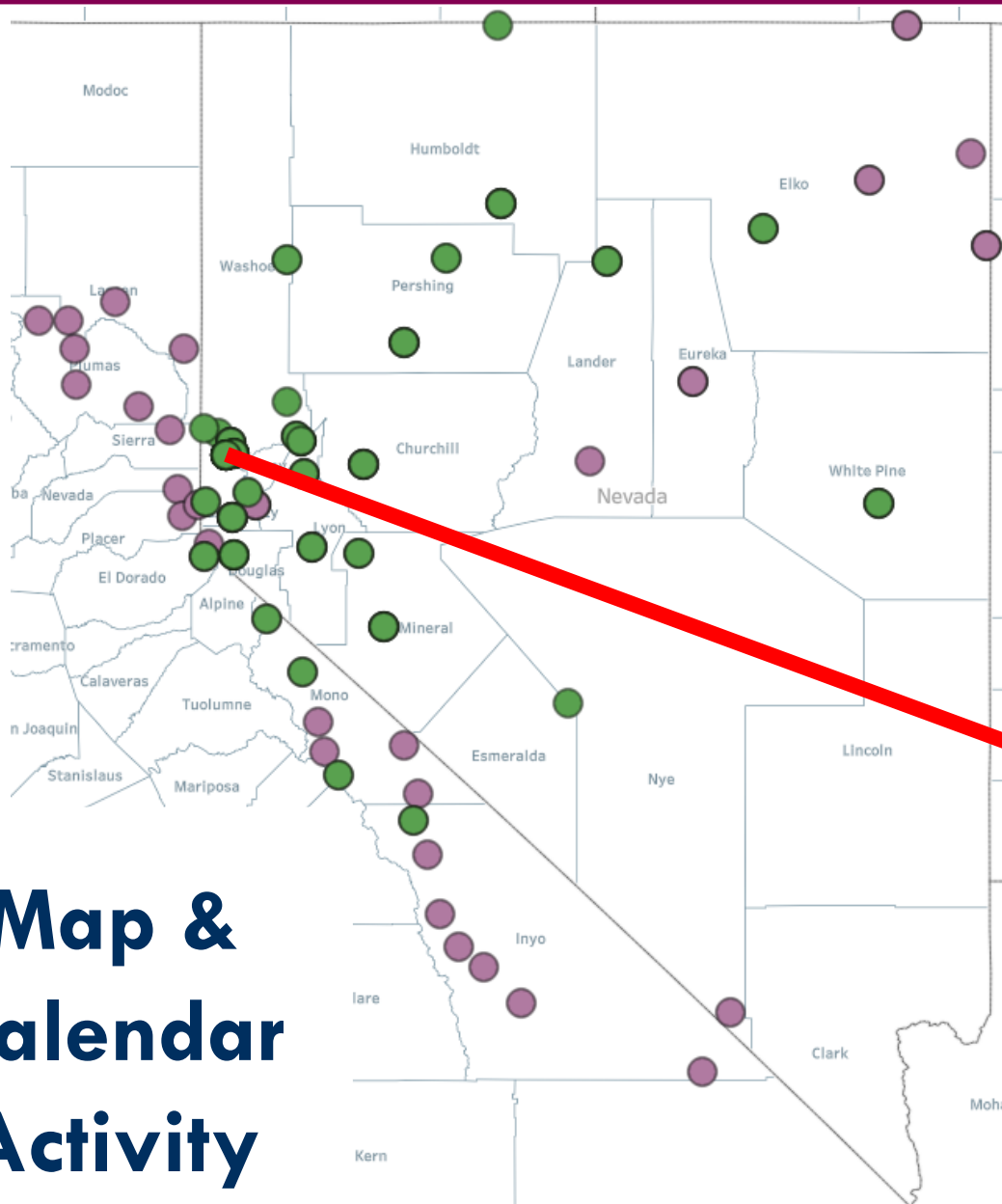


Partner Food Bank Agreement Service Requirements

Shared Beliefs and Guiding Principles:

- We believe that no one should go hungry, ever.
- We believe that EQUITY is at the core of ending hunger and that when we intentionally address inequities faced by people most impacted by food insecurity, everyone facing hunger benefits.
- We believe people facing hunger best understand the realities of food insecurity.
- We work to increase people facing hunger's ACCESS to nutritious and culturally preferred foods, resources, and civic engagement opportunities.

Map & Calendar Activity



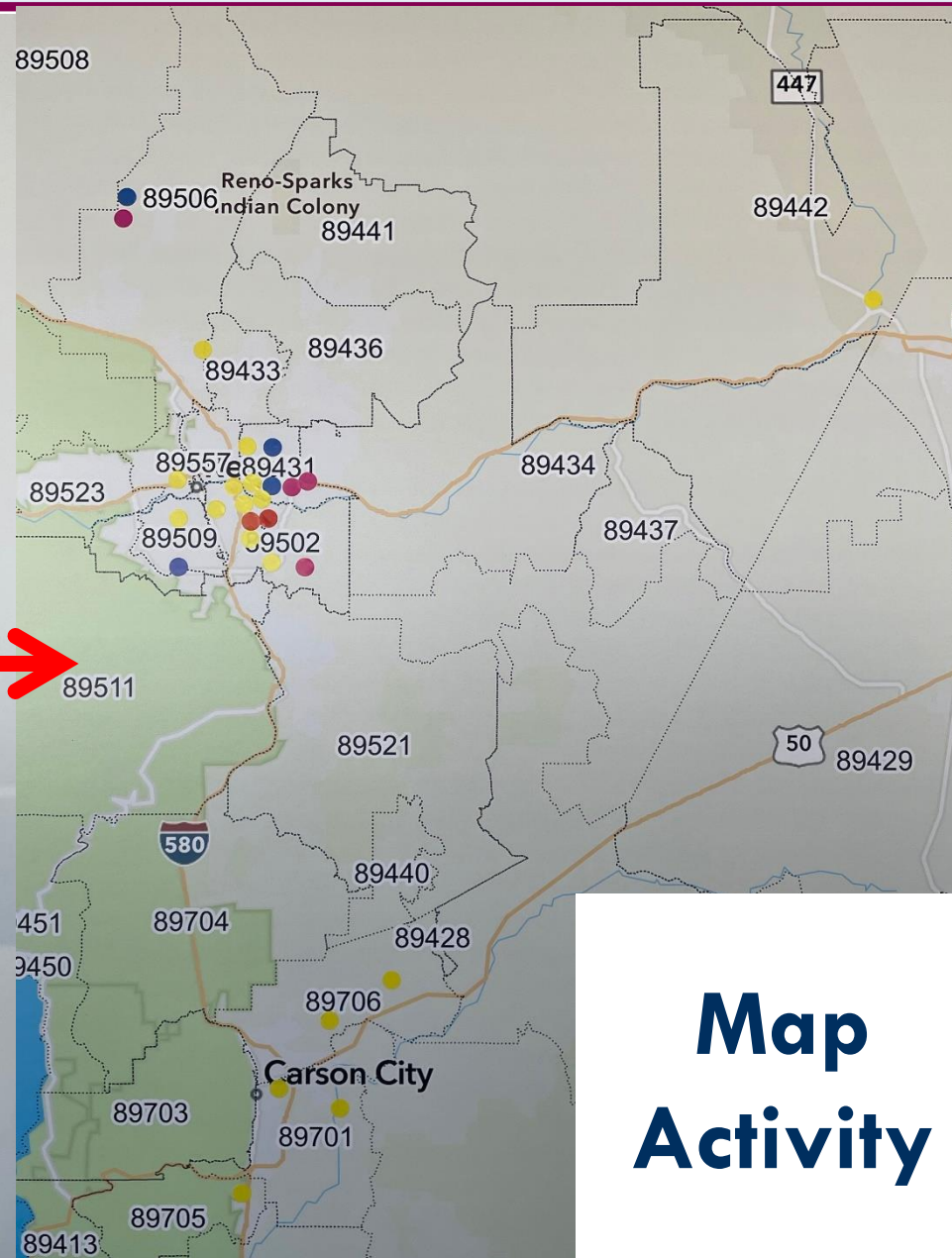
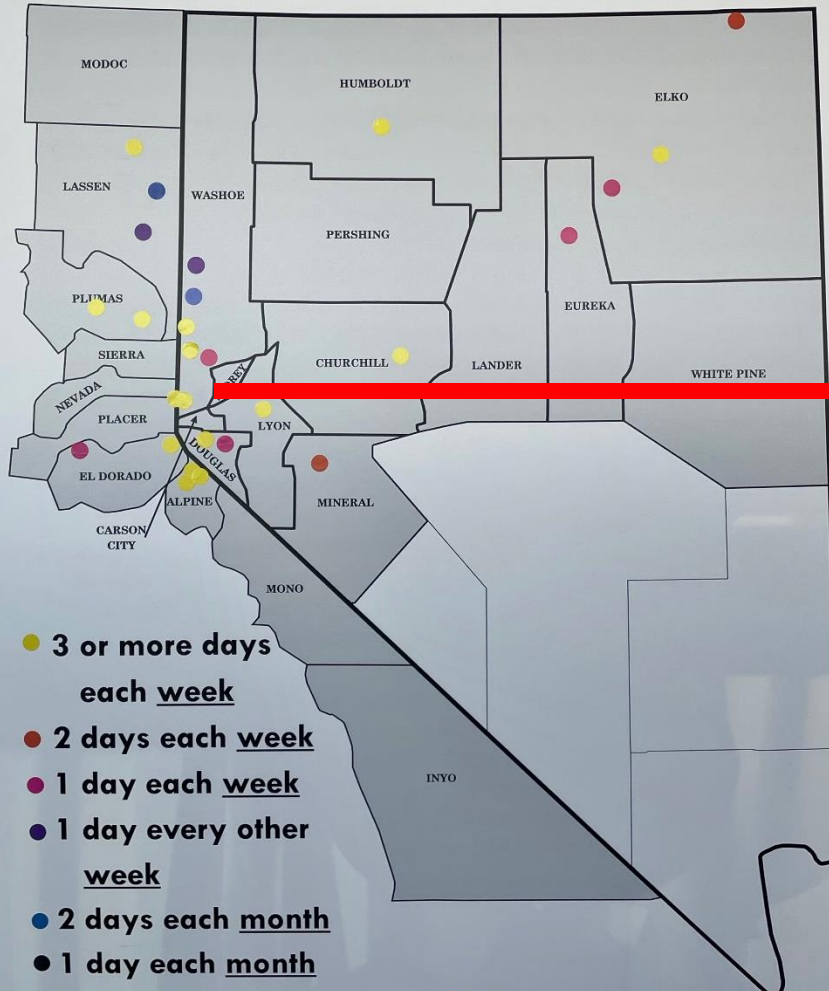


FOOD BANK
OF NORTHERN NEVADA

40TH
ANNIVERSARY

140,000 People Served | 90,000 Square Miles

**Where is your pantry located, and
how frequently is it open?**



**Map
Activity**

What time of day is your pantry open to distribute food? SEPTEMBER 2023

MONDAY	TUESDAY	WEDNESDAY	THURSDAY	FRIDAY	SATURDAY	SUNDAY
<p>● before 12:00pm (morning)</p> <p>● 12:00pm - 5:00pm (afternoon)</p> <p>● after 5:00pm (evening)</p>				1	2	3
Labor Day 4	5	6	7	8	9	10
11	12	13	14	15	16	17
18	19	20	21	22	23	24
25	26	27	28	29	30	

Calendar
Activity

**How do we decide what equitable
access looks like?**

Consult our experts

Partner Food Bank Agreement

Service Requirements

Shared Beliefs and Guiding Principles:

- We believe that no one should go hungry, ever.
- We believe that EQUITY is at the core of ending hunger and that when we intentionally address inequities faced by people most impacted by food insecurity, everyone facing hunger benefits.
- We believe people facing hunger best understand the realities of food insecurity.
- We work to increase people facing hunger's ACCESS to nutritious and culturally preferred foods, resources, and civic engagement opportunities.

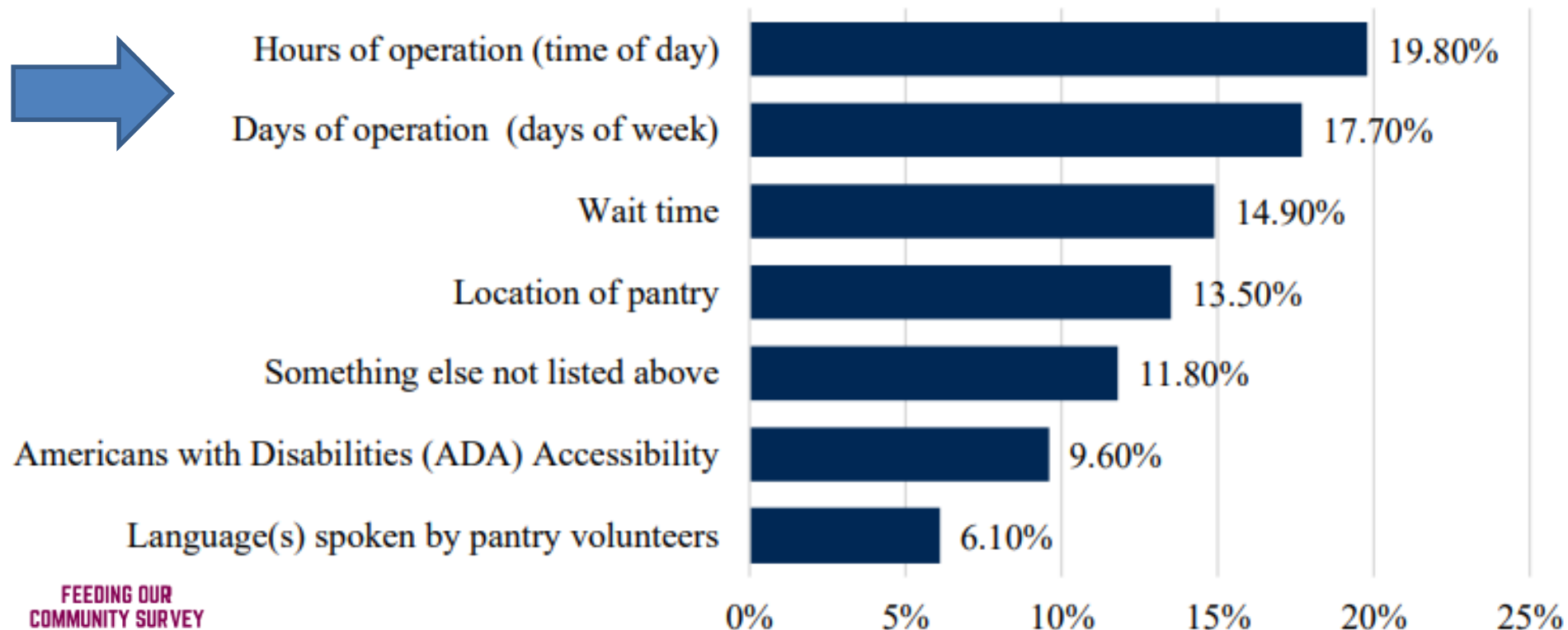


Neighbors

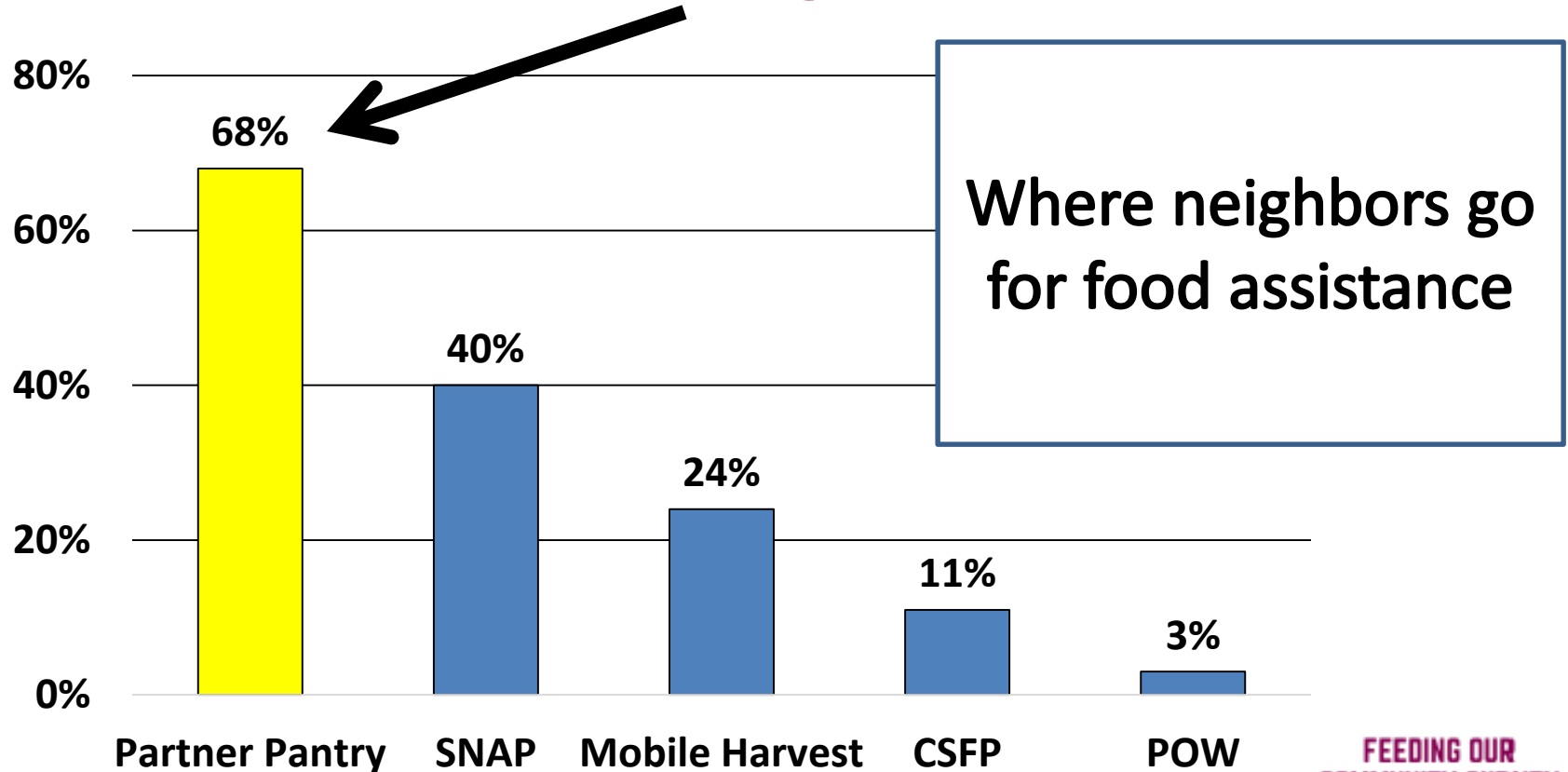
In FBNN's Hunger Survey, what did **Neighbors** tell us?

Equity = Removing Access Barriers

Percentage of Respondents Reporting a Barrier to Accessing Services



Biggest Impact Happens With Partner Agencies

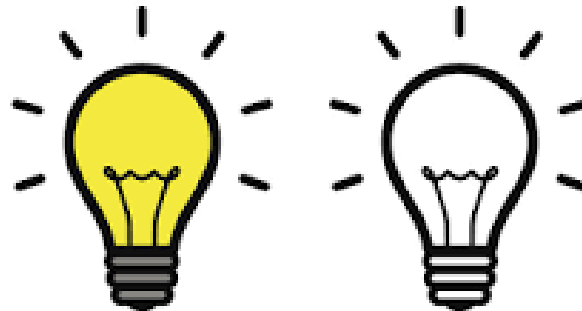


What actions can we take?



Try something different based on what your **Neighbors** say

Partner **Pyramid Lake Paiute Tribe** extended hours to include two **Saturdays** per month



What can you try?

FBNN launched new SNAP hours **evenings** and **Saturdays**

FBNN redesigned website to English and Spanish **language**

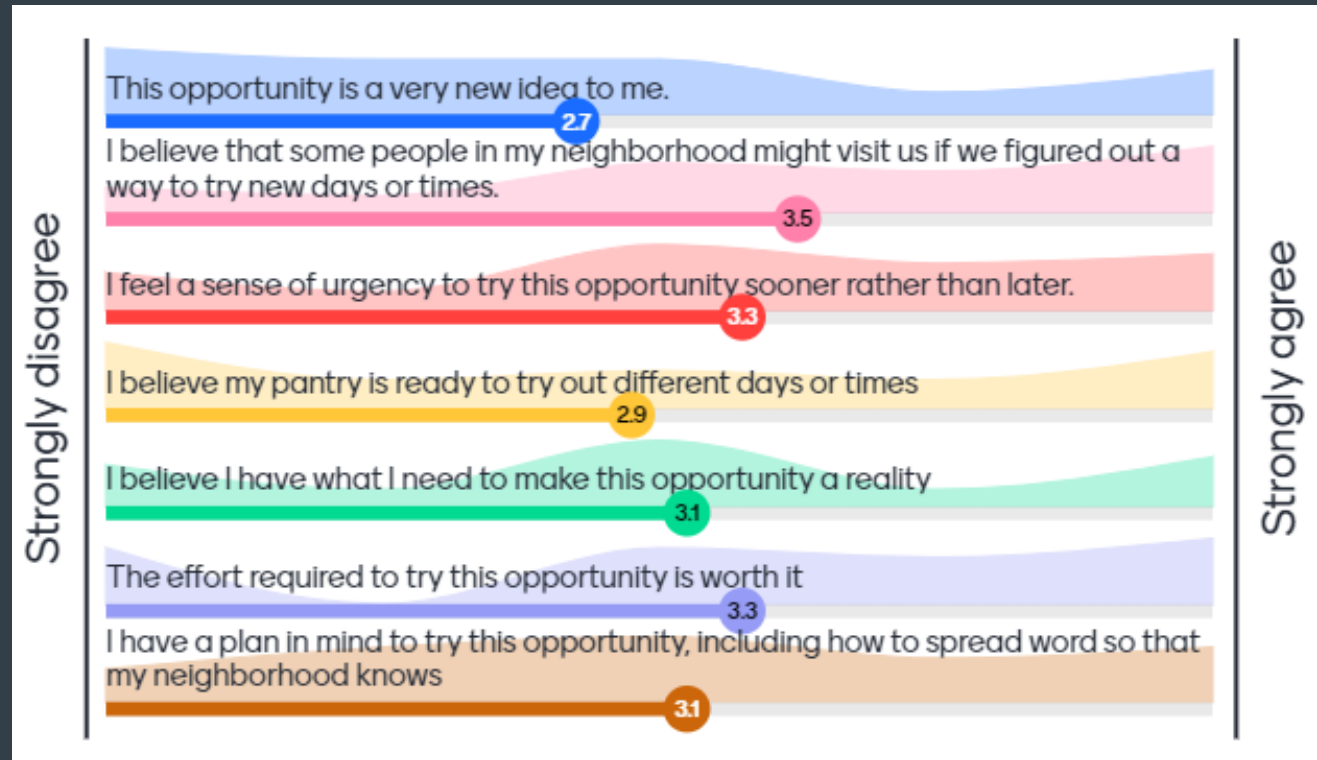
FBNN partnered with local libraries to offer children Summer Meals on **Saturdays**

Attendees' Survey Responses during session

Where are you in thinking about the opportunity to expand or change your days or hours of operation?

Score of 1 = strongly disagree

Score of 5 = strongly agree



**Can we imagine a neighborhood that is
Hunger Free – What does that look like?**



HOW??



What keeps this from being a reality today?

Volunteers
lack of food
transportation - client
staffing
location
space
neighbors capacity > storage/prep/knowledge
funding
education
time

Buyin/Support

Chosen Barrier Selected Among Attendees and Collaboration / Brainstorming Solutions:

Volunteers:

- challenge vs Opportunity?
- High School
- Community Partners
- Incentivize
- Volunteer Appreciation
- Community Service - directed by Judges
Businesses
- Just Serve. LDS church
- Connect w/ neighbors

**We can't do it alone –
we *MUST* do it *TOGETHER!!***

Partnership - A partnership is an arrangement where two or more parties, agree to cooperate to advance their mutual interests.

Collaboration - True collaboration works when **ALL** parties come together with a desire to reach a shared goal to the benefit of all. The sharing of knowledge, resources and experience can bring a better perspective to all aspects of a project creating efficiencies and inspiring team work

Oddie Project

Community Collaboration



FOOD BANK
OF NORTHERN NEVADA

MEMBER OF
**FEEDING
AMERICA**



**The
Children's Cabinet**

Our individual missions are strengthened by our willingness and ability to come together to move toward action and results that will create lasting impact.

GOAL: To harness passion, deploy expertise and leverage resources for the purposes of integrating services and support necessary to effectively and efficiently improve the long-term financial and economic well-being of individuals and families.

Supporting Partners

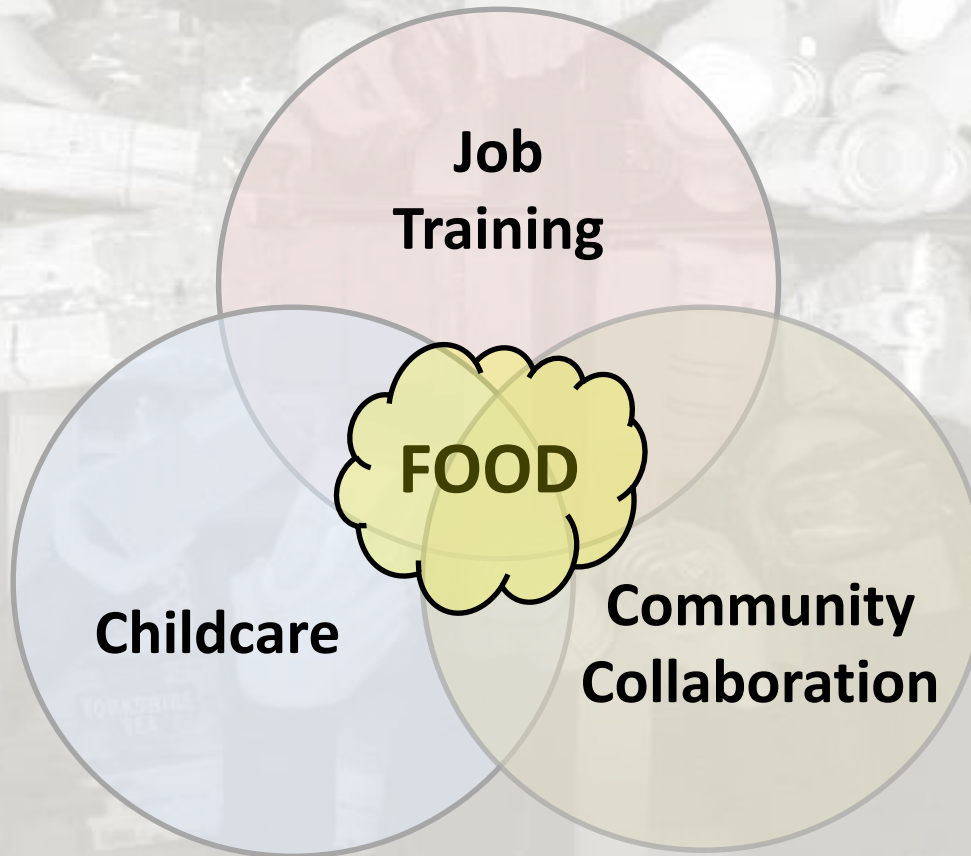


BOYS & GIRLS CLUB
OF TRUCKEE MEADOWS

COMMUNITY
HEALTH
ALLIANCE

Oddie Project

Creating Neighborhood-Focused Change



Oddie Project

A Neighborhood Initiative

- Community Food Pantry/Market
- Onsite Culinary Workforce Training program/Production Kitchen
- Community Kitchen Access
- Licensed Childcare facility for 100+ children with Boys & Girls Club of Truckee Meadows
- Onsite Workforce training for high demand industry sectors: Construction, Healthcare, IT, Hospitality
- Onsite Industry Recognized Certifications include Multi-Core Craft Curriculum (MC3), ServSafe, OSHA-10, First Aid/CPR,
- Wrap-around case management with The Children's Cabinet
- Resource Center/Hub
- Multi-use Community Meeting and Classroom Space



Call to Action...

What's Next